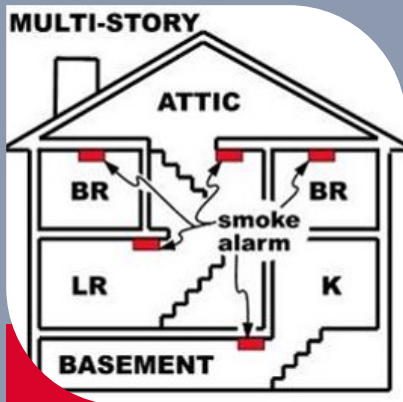


# Right Alarm - Right Location

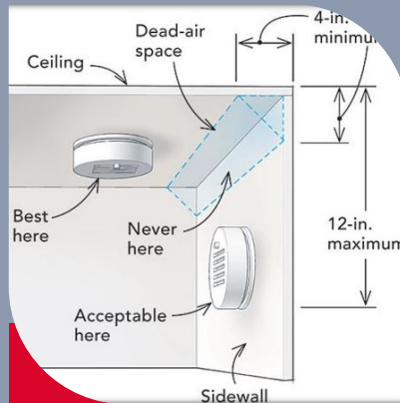
The right alarm in the right location may save your life.

## Smoke Alarms



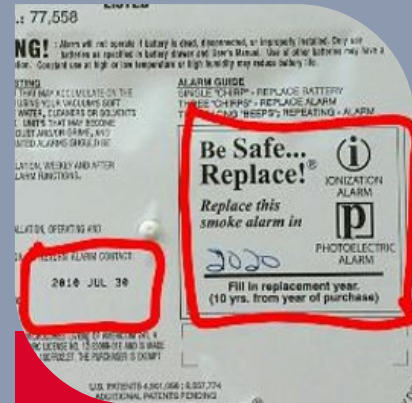
### Location

Smoke alarms should be installed in **every** bedroom, **outside** each sleeping area, and on **every** level of your home. In the basement, install on the ceiling at the bottom of the stairs. On levels without bedrooms, install in the common room or near the stairway.



### Placement

Smoke alarms can be installed on ceilings or walls. For **ceiling** installation, mount alarm toward the middle of the ceiling, no closer than 4 inches from walls. If ceiling installation is not possible, mount alarms on the **wall**, no closer than four inches from the ceiling.



### Expiration

Residential smoke alarms are rated for **10 years**. The date of manufacture is on the back of your smoke alarm.

If the date is **missing** or **unreadable**, replace the alarm.



### Test

**Test** smoke alarms at least once a month.

Replace batteries at least every year (unless the alarm has a 10-year sealed battery).



### Install

Install only UL-listed alarms bought from local or online retailers.

Check with your local fire department or American Red Cross to see if they have free alarms available.

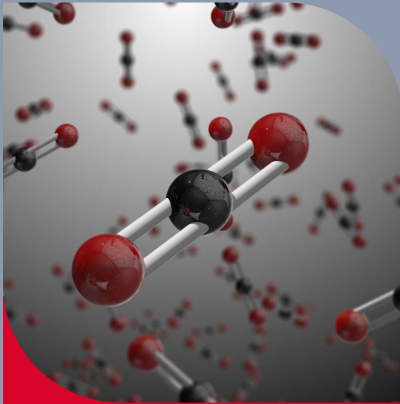


### Avoid

To avoid nuisance alarms, keep smoke alarms at least 10 feet away from cooking appliances, as well as 3 feet away from bathrooms and laundry rooms.

**TIP: When replacing alarms, purchase ones with a 10-year sealed battery.**

# Carbon Monoxide Alarms



## Education

Carbon monoxide (CO) is a colorless, odorless, poisonous gas.

The only safe way to detect CO in your home is with a CO alarm.



## Sources

Every home with a fuel-burning appliance, attached garage, or fireplace should have a CO alarm.



## Location

Install one CO alarm per level in the hallway near each bedroom or sleeping area.

Alarms should be placed at least five feet away from a CO source.

# Deaf/Hard of Hearing Alarms



## Hearing Loss

Many suffer from some degree of hearing loss. When a home fire emergency occurs, those individuals are at greater risk.



## Technology

Deaf/Hard of Hearing Smoke Alarms, commonly known as "bed-shakers," work with smoke alarms in the home to notify individuals of a possible life-threatening fire emergency.



## Resource

South Carolina deaf/hard of hearing residents may qualify for free resources.

[Click here to learn more.](#)

For more information on alarms, visit:  
[firesafe.sc.gov](https://firesafe.sc.gov)