

Home Fire Escape Planner

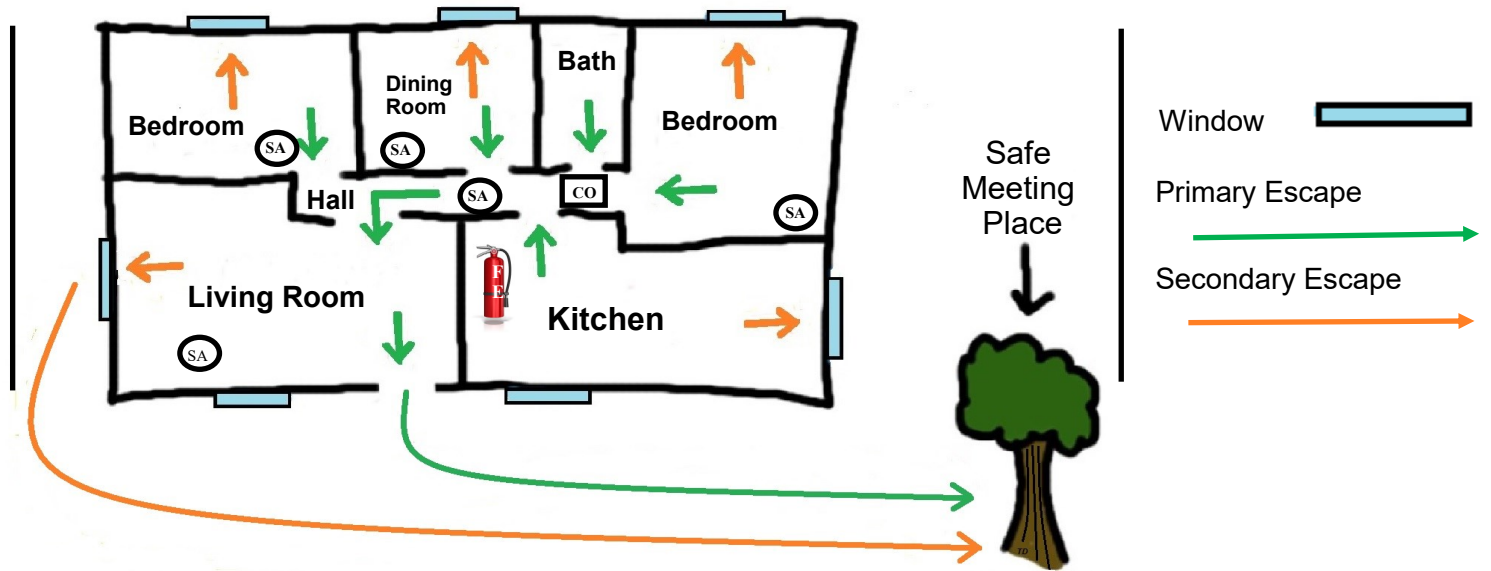
FE = Fire Extinguisher



SA = Smoke Alarm



CO = Carbon Monoxide Alarm



Window

Primary Escape

Secondary Escape

Draw the layout of your home. Be sure to include:

- Doorways and windows in each room
- Smoke alarm locations (label "SA") *Date of manufacture _____
- Carbon monoxide alarm location(s) (label "CO") *Date of install _____
- Fire extinguisher location(s) (label "FE") *Date last serviced _____

Visit each room in your home:

- Find two ways out - draw arrows on your plan

Draw a separate floor plan for:

- Basements, 2nd or 3rd floors, and/or finished room over garage

Mark your safe meeting place on your plan:

- Pick a permanent object not easily moved, such as a tree, mailbox, or light pole.
- Make sure the object is a safe distance away from your home.
- Make sure the numbers on your house can be seen day or night.

Practice your plan at least twice a year and attempt escape from every room.

Close the door behind you as you escape.

Sleep with your bedroom door closed - it may save your life.

Doorways and windows should open easily to get outside.

During a fire, get low and go. When outside, stay outside.

Never stop to pick up anything on the way out.

Never go back into the home for any reason.

Call 9-1-1 from outside the home - know your address.

Make sure guest/visitors know your plan.



FireSafeSC@llr.sc.gov



@FireSafeSC



www.FireSafe.SC.gov

